

# **ADVANTAGE - 2000 +**

## **Installation Instructions :**

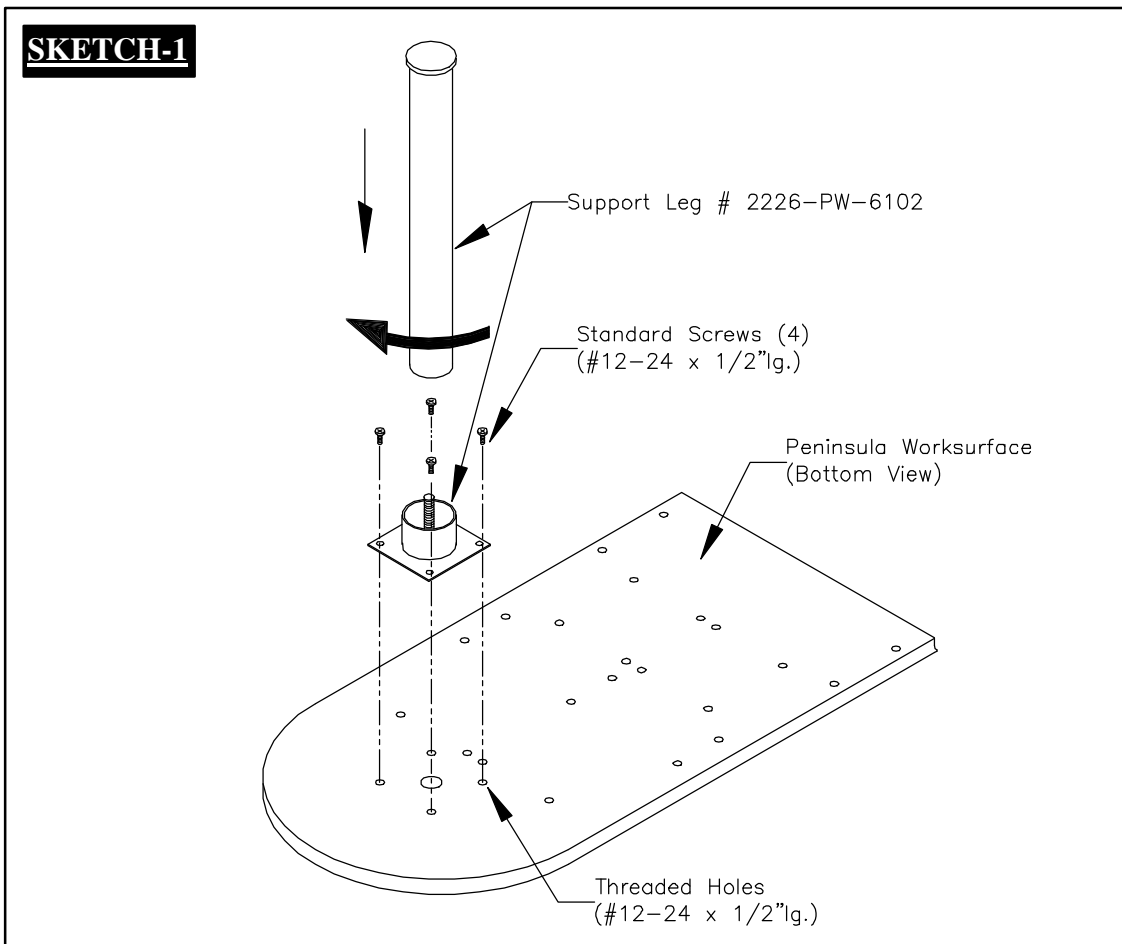
**#2226-PW : Peninsula Work surface - laminated.**

<b><u>Item No.</u></b>	<b><u>Component Description</u></b>	<b><u>Qty.</u></b>
#2226-PW-6101	Peninsula Laminated Wood Deck	1
#2226-PW-6102	Support Leg	1
#2226-PW-6103	Threaded Hole Brkt. (factory installed)	26
#2226-PW-6104	Mounting Bracket ( set of two)	1
	Standard Screws (#12-24 x 1/2" lg.)	12

### **STEP (1) : Installing Support Leg : # 2226-PW-6102**

**Screw the top & bottom portion of the Support Leg together. Thread together until overall length is approx. 27" long.**

**Mount the Support Leg to the bottom surface of the Laminated Work surface wood deck with four (4) Standard Screws. REFER TO SKETCH - 1 BELOW**



**STEP (2) : Installing Mounting Brackets : # 2226-PW-6104**

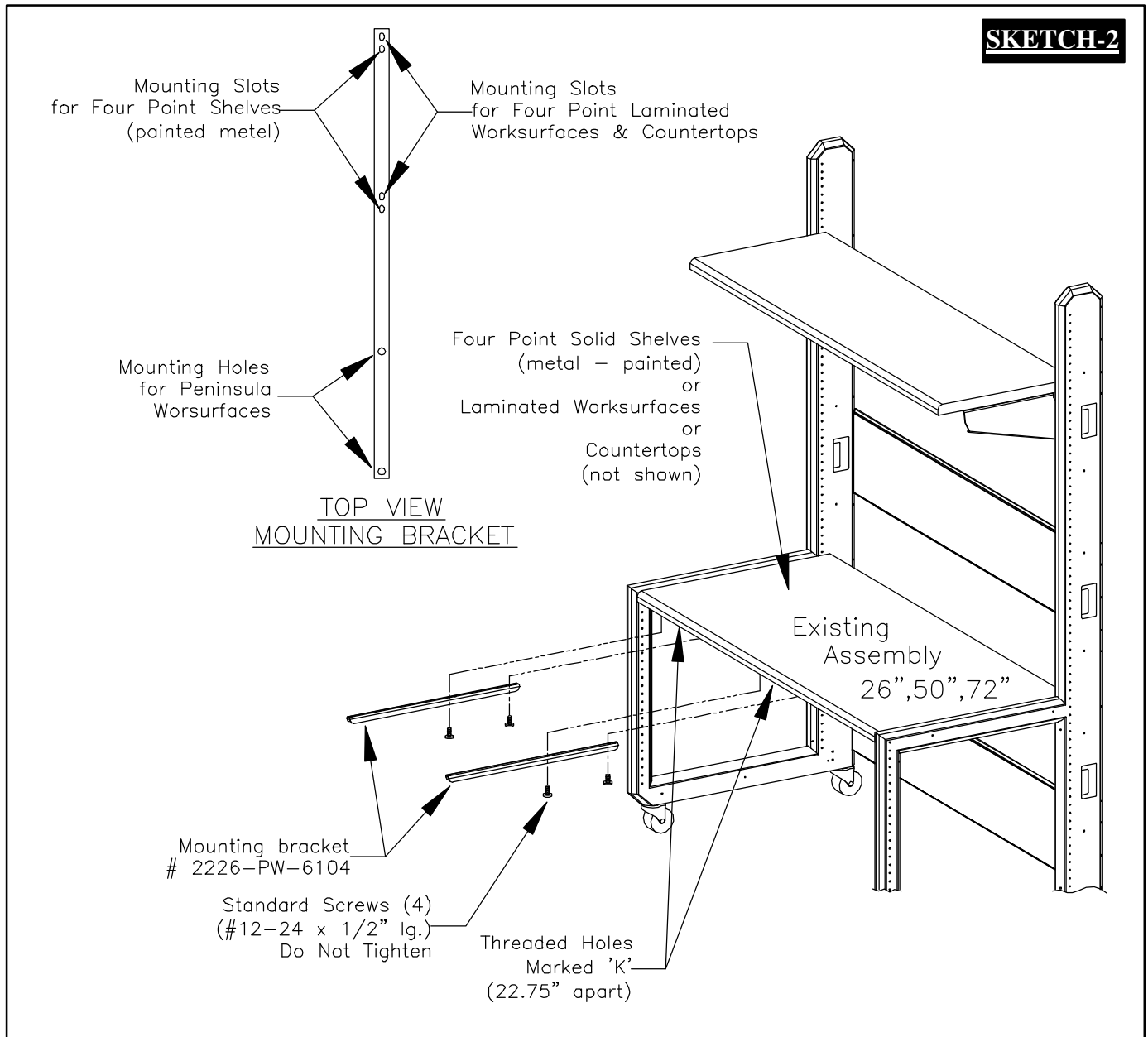
**Locate the threaded holes marked 'K' on the underside of the shelf surface that the Peninsula is to mount. Install the Mounting Bracket to the four (4) holes marked 'K' through the slotted holes in the Mounting Bracket. Use the correct slotted holes as noted in the TOP VIEW of the Mounting Bracket as to witch type of shelf the Peninsula is being attached. Do not tighten the four screws at this time.**

**The 26" wide shelves have one (1) Peninsula mounting location.**

**The 50" wide shelves have two (2) Peninsula mounting locations.**

**The 72" wide shelves have three (3) Peninsula mounting locations.**

**REFER TO SKETCH - 2 BELOW.**



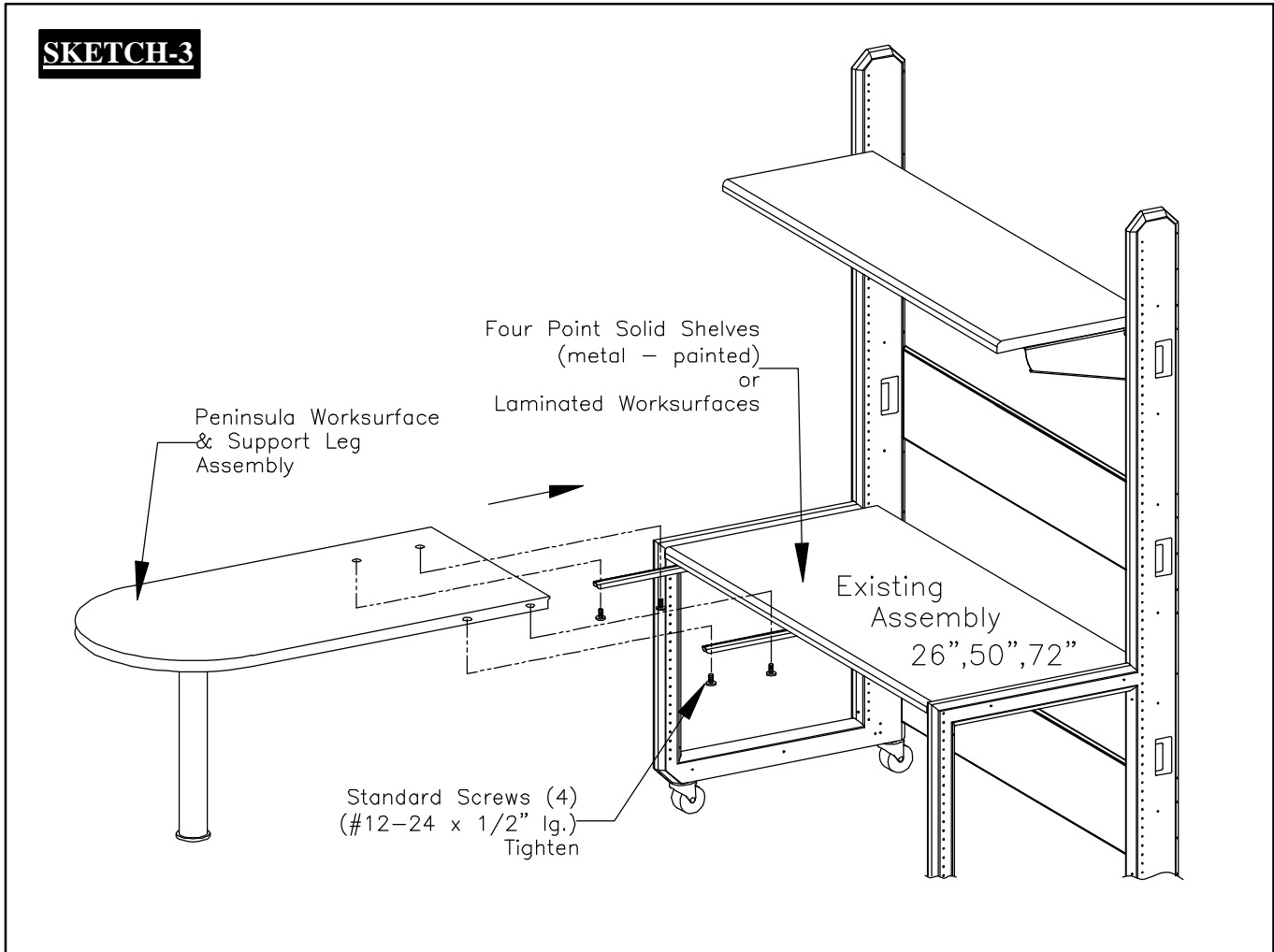
**STEP (3) : Mounting the Peninsula Work surface Ass'y to Mounted Brackets.**

***Align the four (4) threaded holes on the underside of the Peninsula Work surface wood deck to the four (4) through holes in the Mounted Brackets and install four (4) Standard Screws. Tighten the four screws that go into the wood deck.***

***Push the Peninsula wood deck to be flush against the shelf so that the radius in the wood deck is against the radius of the shelf.***

***Tighten the four (4) Standard Screws that mount through the slots in the brackets that mount to the underside of the shelf surface.***

**REFER TO SKETCH - 3 BELOW**



***Peninsula Work surface height adjustment is made by turning the bottom portion of the Support leg. Turn to the right to raise the height and turn to the left to lower the height.***

***TIGHTEN ALL SCREWS BEFORE LOADING WITH EQUIPMENT!***