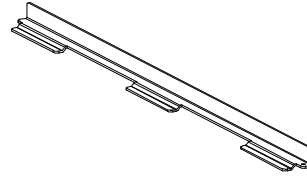


Installation Instructions :

#2540-AS : Anti-slide Bracket



INSTALLATION : Align the three offset tabs on the Anti-Slide Bracket (#2540-AS) with any three slots in the six versions of the Slotted Accessory Shelves.

STEP - 1 : Pass the three tabs through the shelf slots with tabs pointing down.

STEP - 2 : Rotate the Anti-Slide Bracket until it rests against the shelf surface with the 90° positive stop lip pointing up. See sketch.

NOTE : The function of the Anti-slide Bracket is to provide a positive stop for monitors, books, papers, etc. The bracket will also work with a Four Point Slotted Accessory Shelf when the rear is tilted down but the bracket must be reversed.

